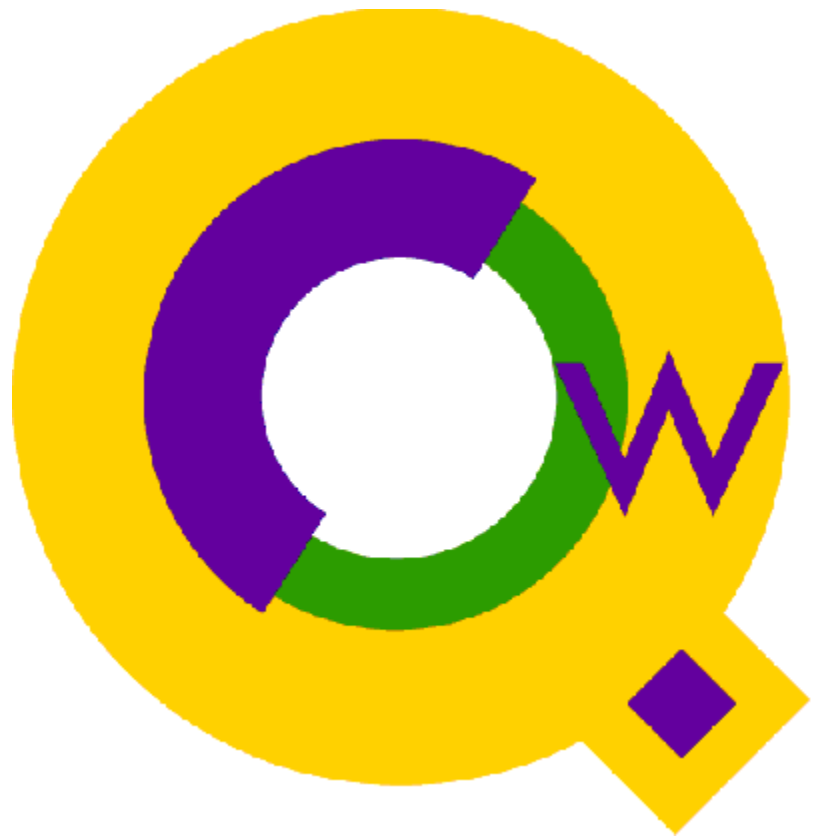


---

Qedit for Windows 5.9

# Change Notice



By Robelle Solutions Technology Inc.

Copyright 1997-2008 Robelle Solutions Technology Inc.

Permission is granted to reprint this document (but not for profit), provided that copyright notices is given.

QEDIT and SUPRTOOL are trademarks of Robelle Solutions Technology Inc. Windows is a trademark of Microsoft Corporation. Other product and company names mentioned herein may be the trademarks of their respective owners.

Updated Tuesday, October 06, 2009

Robelle Solutions Technology Inc.  
7360 – 137 Street, Suite 372  
Surrey, BC, Canada V3W 1A3  
Toll-free: 1.888.robelle  
Phone: 604.501.2001  
Fax: 604.501.2003  
support@robelle.com  
www.robelle.com



---

# Introducing Qedit Version 5.9

Qedit for Windows is the next generation of our popular editor, which consists of a Windows editing client and an MPE/iX or HP-UX editing server that work together to edit host files. Since it was first released, we have added more functionality and expanded its capabilities.

This document describes the changes to Qedit since version 5.9. If you have an earlier version of Qedit, you can obtain more information about the changes to your version by contacting the Robelle Technical Support department or by visiting the Qedit for Windows Web pages.

---

## Compatibility

Qedit for Windows is available in a 32-bit version only. Qedit versions 4.7.02 and later are compatible with Windows 95, Windows 98, Windows NT 3.51, Windows NT 4.0, Windows 2000 and Windows XP.

---

## Documentation

We continuously revise and update the *Qedit for Windows User Manual* and the Qedit help documentation. These revisions cover the new features added to Qedit, but they also include significant new material on how to combine the various Qedit features to make you more productive. For example, see the section “Power Tips for Developers” in the user manual.

Qedit for Windows also has a scripting language component. This module allows users to expand Qedit's functionality, customize it to their environment and automate repetitive tasks. The Qedit Scripting Language Reference Manual (QSL) is available online and as a PDF file.

### Context-Sensitive Help

**Help** buttons have been added to all dialog boxes. Selecting these buttons automatically displays context-sensitive help text. Use the **Help** button when you are uncertain about what a dialog box does or what some of the features of the dialog box mean.

---

## Compatibility

In most cases, when you have selected some text, typing a character replaces the selection. With the introduction of column operations, there is now one exception to this rule. If you have a selection and you hit the TAB key, the selected lines are shifted right. The text is not replaced. If you wish to replace the selection, you have to use the

DELETE key (or any other key except TAB) first to get rid of the selection then enter the tab character.

---

## Installation

Qedit for Windows is a client-server application. There can be up three components to install:

- The client software is installed onto a computer running Microsoft Windows.
- The MPE server software is installed onto a host computer running MPE/iX.
- The HP-UX server software is installed onto a host computer running HP-UX.

The Qedit for Windows CD may contain both the client and server software.

The server installation process uses ftp to transfer the files from your PC to the host system(s). Make sure ftp access is enabled on the host(s). If you do not have ftp access to the host(s), please contact us, and we will arrange to send you the host programs on a DDS tape.

If you receive the servers on DDS tape, you should refer to the corresponding reference manual for installation instructions.

### Step-by-Step Instructions

1. Insert the CD into your CD-ROM drive.
2. The installation program should start automatically. If it does not, click on the Windows **Start** button, select **Run** and enter `d:\SETUP`, where `d:` is the letter of your CD-ROM drive.
3. When you are asked for the type of installation, select **Typical**.
4. When asked, specify the destination drive and directory where you want Qedit to reside.
5. Next, you are prompted for the name of the Program Folder where the Qedit shortcuts should be created. You can use the default location or enter your own.
6. To validate your copy of Qedit, enter the Serial Number Verification codes we provided.
7. When prompted, confirm that you wish to install the server software.
8. In the Qedit Server FTP Installation dialog box, you can select the host where the server is going to reside. You can install the server program on one MPE host and one HP-UX host in a single operation.
  - a. To install on an HP3000 host, select **Install MPE Server**. The installation process has to logon as `MANAGER.SYS, PUB` on the HP3000. This information is entered for you. There is one mandatory field: Host or

IP Address. Enter the HP3000 host name e.g. `prodmpc` or its IP address e.g. `201.93.40.5`. You might have to qualify the host name with a domain and organisation e.g. `prodmpc.widget.com`. If you use an IP address, do not put leading zeroes e.g. not `201.093.040.005`. Enter session name, if needed, and passwords for session, user, account and group, as required.

- b. To install on an HP9000 host, select **Install HP-UX server**. The installation process has to login as `root` on the HP9000. This information is entered for you. There is one mandatory field: Host or IP Address. The same naming rules apply to the HP9000 as to the HP3000 above. You have to enter the `root` password, if needed for a successful login to the HP9000.
9. Select **Install Server**.  
The install process then performs the ftp transfers. It also displays progress messages as it goes along. The installation sends several megabytes of information to each host, so this may take a few minutes on a slower connection.
10. If you see **The "FTP process to your MPE/HP-UX Server did not appear to work"** in a message window, this means there was a problem during installation. You should verify that you have proper ftp access to the hosts. You should also verify the login information entered in step 6.
11. If the transfer is successful, select **Exit** to end the Setup program.
12. If you are installing to an MPE host only, you are done. Otherwise, proceed with the next step.

## Completing the HP-UX Server Installation

1. Once the HP-UX server files have been copied from the PC to the HP-UX host, you need to complete a few steps on the host.
2. Using a terminal or emulator e.g. Reflection from WRQ, sign on to the HP-UX host as `root`.
3. Setup the `ROBELLE` environment variable that the server daemon needs:

```
ROBELLE=/opt/robelle  
export ROBELLE
```

4. Start the Qedit for Windows server daemon:

```
/opt/robelle/bin/qedit -d -t
```

The server process will stay running until it is killed explicitly or until the system is shut down. You will have to do steps 1-3 every time you want to start the server. Refer to the Qedit for HP-UX Reference Manual for the instructions on starting the daemon as part of the system startup process.

## Installing Additional Servers

If you need to install the server programs on more servers, you can run the setup from CD again, and this time select the **Server Install (CDROM Only)** installation option, then repeat steps 7 to 12 of the instructions above.

---

## What's New Since Qedit Version 5.9

The enhancements and bug fixes are listed below. They are grouped in broad categories. The version number where the item first appeared is enclosed in brackets.

For a history of development highlights, see Appendix A in the *Qedit for Windows User Manual*. For Qedit Scripting Language (QSL) highlights, refer to the *Qedit Scripting Language User Manual*.

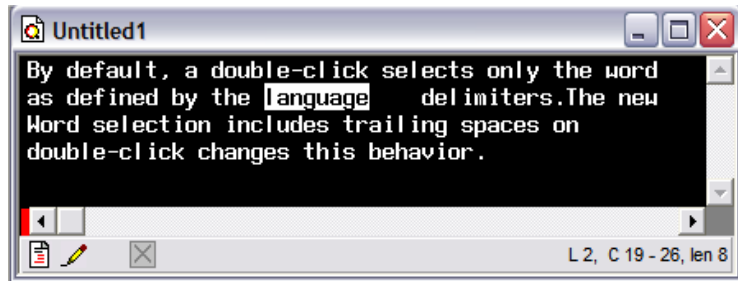
- To be more in line with Windows conventions, Qedit for Windows support files are now installed in the Windows application data directory instead of the Windows system root directory. Typically, the system root directory is `\windows` and the application data is `\Documents and Settings\loginUsername\application data`. More specifically, Qedit creates a subdirectory called `Qedit` under the application data directory.  
[5.8.11]
- A better error message is displayed if the main window is not large enough to accommodate all document components. A new argument "-m" has been added to work around this problem when launching Qedit from the command line.  
[5.8.11]
- There is a new option in the **General Preferences** dialog: **Word selection includes trailing spaces on double-click**. When disabled, the default, double-clicking on a word selects the current word only according to valid language delimiters. If the option is enabled, Qedit selects the word and all spaces that follows.  
[5.8.10]

---

# Enhancements

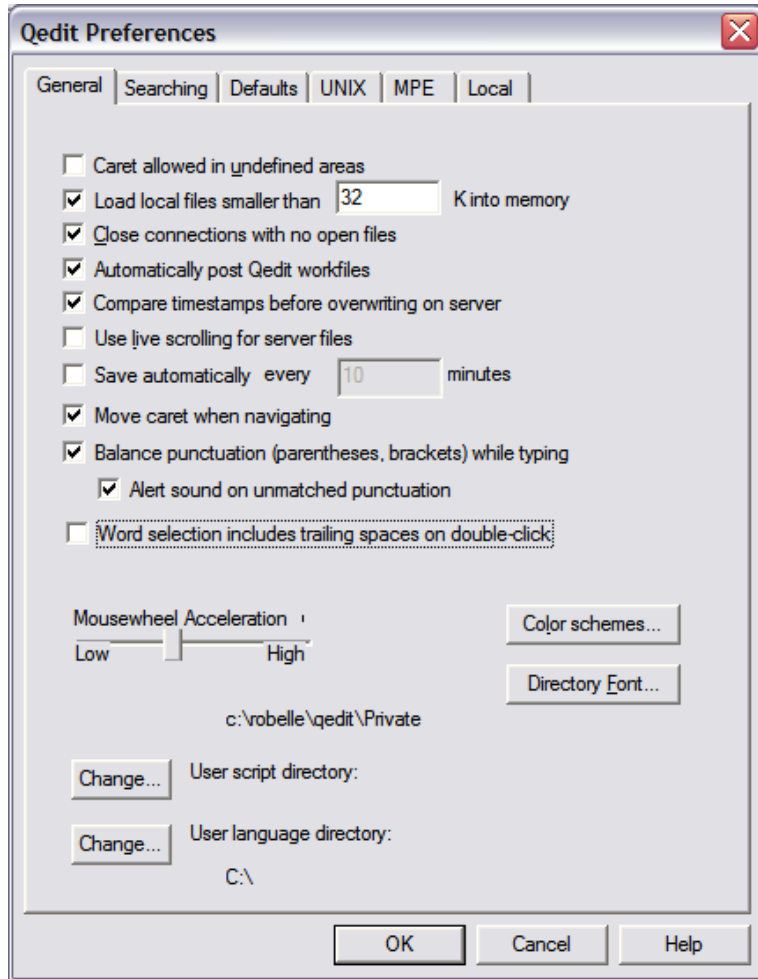
## Include Trailing Spaces On a Word Selection

By default, a double-click selects only the word as defined by the language delimiters.



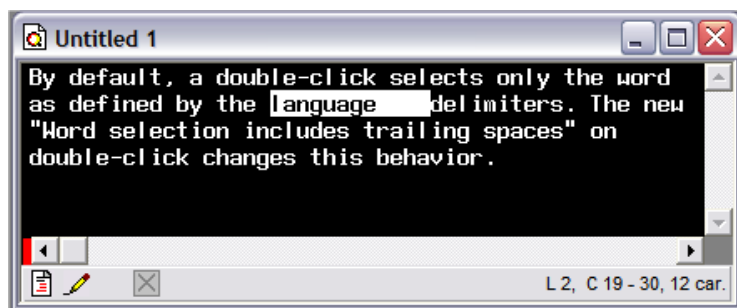
*Only the word is selected*

The new **Word selection** includes trailing spaces on **double-click** changes this behavior.



*The General tab of the Preferences dialog*

When the option is enabled, a double-click selects the word and all spaces that immediately follows.

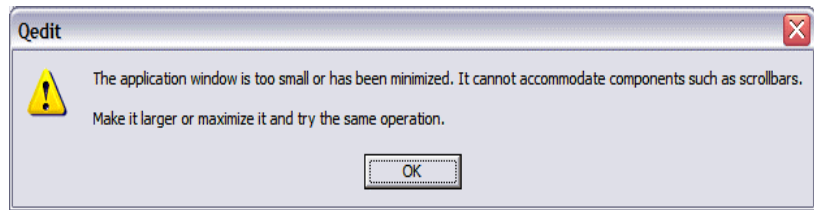


*All spaces are selected along with the word*

## Application Window Too Small

The Qedit application window must be large enough to accommodate a minimum number of components such as vertical and horizontal

scrollbars. Qedit now displays a better error message if the application window is too small.



*Application window is too small error message*

As recommended in the message, the solution is to enlarge the application window before attempting to open the file again.

This problem was most obvious when launching Qedit from a DOS Command window or from the Run dialog box. When doing so, Qedit starts with the window size used on the last exit. This could be a very small window or Qedit may have been closed from the minized icon on the taskbar.

To ensure the application window is large enough, a new command line argument has been added: "-m". When specified, Qedit launches in a maximized window. For example, the command could be:

```
C:\robelle\qedit\qwin32.exe -m  
"C:\data\myfile.txt"
```

## Support Files Location

To be more in line with Windows conventions, Qedit support files are now installed in the Windows application data directory instead of the Windows system root directory. Typically, the system root directory is \windows and the application data is \Documents and Settings\loginUsername\application data. More specifically, Qedit creates a subdirectory called Qedit under the application data directory.

The directory name is based on the APPDATA system variable. If the variable does not exist, the support files remain in the system root directory.

For a new install, the subdirectory and files are created when Qedit is launched for the first time. For an upgrade, the install script copies the current support files to the new location, if they do not exist already. The original files are not removed but they are not used anymore. The install script copies default support files only.

- The application profile: QWIN.ini
- The document database and its backup: QWINDDB.dat, QWINDDB.bkp
- The connection template file: QEDCONN.dat. If the connection template file was changed in the **Customize Server Settings** dialog box, that file is not copied.

The error log file: QEDERR.log.

---

## Other Changes and Bug Fixes

There are no other changes in this version.